

T.8N., R.2E., S.L.B.&M.

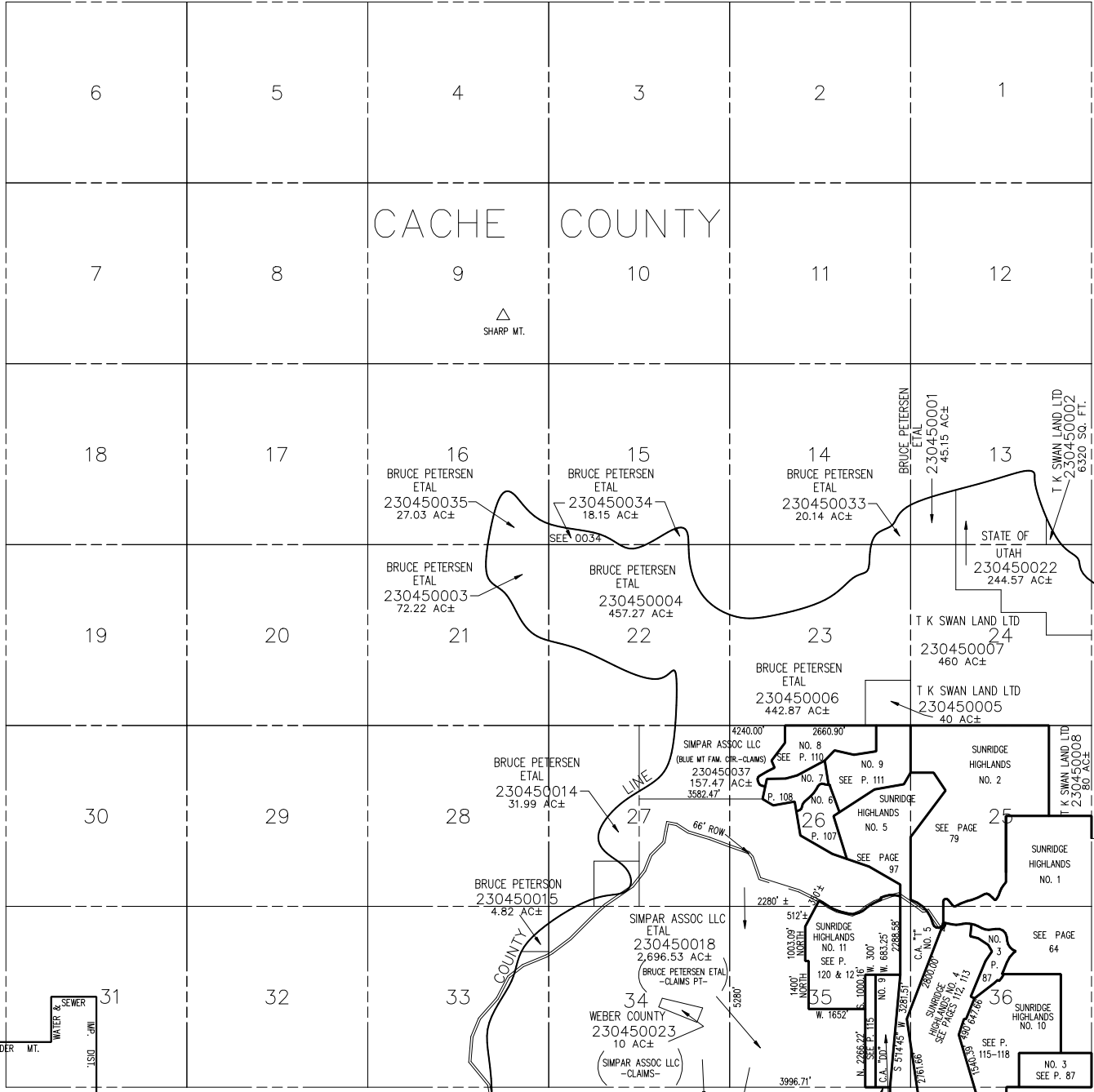
IN WEBER COUNTY

SCALE 1" = 2400'

TAXING UNIT: 58

SEE PAGE 44

SEE PAGE 46



NOTE: WEBER/CACHE ASSESSMENT LINE CHANGED TO COUNTY LINE - 1995

SEE PAGE 12